

Cargo Proa Prototype

Building Blog

MARCH 2022

After 18 months of almost zero inconvenience from Covid, it has hit the cargo proa with a bang. Neither Rassy nor I have had it, but it is playing havoc with containers and shipping availability and prices. Since Xmas, we have been booked on 4 ships, missed two as the site was closed (Xmas holiday and flooding a couple of weeks ago) for the week-long window to load the containers, another because they overbooked (there used to be 2 ships per month, now there is only one. Same freight, no containers to put it in, apparently) and threw us off.

Next load window is 30th March. Hopefully we are on it. I got worried that the trucks would not be willing or able to access the shed, so moved the components up to the easy part of the access road. A lot of fun using my car and Rassy's little box trailer. The ww hull and tender were too much of a challenge, so I got a tractor to move these. A few exciting moments, but the big bits are all there.

I have also been building fibreglass sheets which will become wing sail leading edges. After a stick up with wax paper, I switched to aluminium foil as a mould release. Works well and looks cool. May or may not stay stuck, may or may not reflect radar.

Also put some hatches in the tender and vent/bilge pump holes in the lee hull ends. Could have bought plastic ones, but went with composite. They need cleaning up, but should do the job. Once they are all in, the lee hull ends can be moved and the big shed clean up begins. The containers leave on the 5th April, arrive on the 18th. I leave on the 7th, which will give me time to get things organised in Suva. Looks like we have a new/better build site and interest from various Govt departments, education institutes and NGO's is building.



Lee hull centre section off the trailer



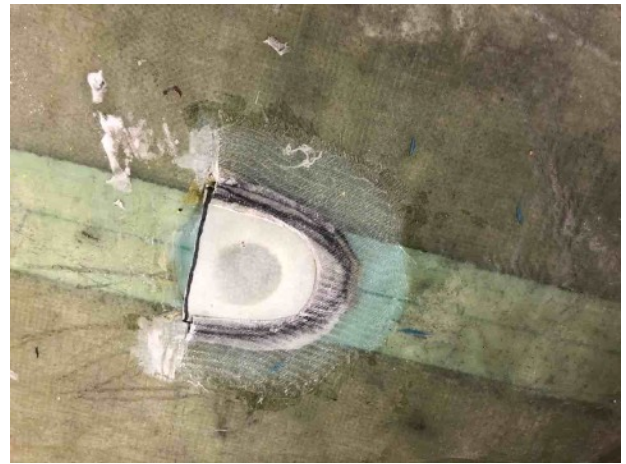
Lee hull centre section on the trailer



Lee hull middle section



Masts on trailer



Lee hull vents closed



No tow bar needed



Tender and tractor



Lee hull vents



Tender hatches



Toybox on trailer 2



Who needs a tow bar 2



Toybox on trailer



Who needs a towbar 3



Waiting for the containers



Wing leading edges with alu foil